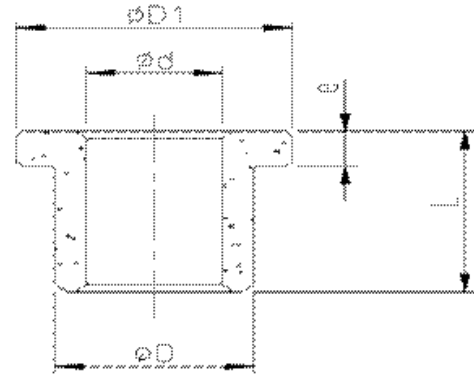


AM, AI, AW



AL, AJ (with flange)

Material Chemical Component	Cu 54-56% Sn 4-6% Fe 39-41%							
Physical and Mechanical Performance	Oil content (%)	≥18%	Oil density (g/cm ³)	6.2-6.8	Crushing strength (N/mm ²)	>150	Surface hardness (HB)	25-55
HMEC Type no.	Dimension							
	d		D		L		D1	e
AM 404630	40	+0.044 +0.009	46	+0.068 +0.013	30	±0.165		
AM 404640	40	+0.044 +0.009	46	+0.068 +0.013	40	±0.195		
AM 253225	25	+0.038 +0.007	32	+0.068 +0.013	25	±0.165		
AM 202850	20	+0.038 +0.007	28	+0.068 +0.013	50	±0.195		
AM 253525	25	+0.038 +0.007	35	+0.068 +0.013	25	±0.165		
AM 253550	25	+0.038 +0.007	35	+0.068 +0.013	50	±0.195		
AM 304025	30	+0.038 +0.007	40	+0.068 +0.013	25	±0.165		
AM 304035	30	+0.038 +0.007	40	+0.068 +0.013	35	±0.165		
AM 303525	30	+0.038 +0.007	35	+0.068 +0.013	25	±0.165		
AM 303825	30	+0.038 +0.007	38	+0.068 +0.013	25	±0.165		
AM 303830	30	+0.038 +0.007	38	+0.068 +0.013	30	±0.165		
AM 303840	30	+0.038 +0.007	38	+0.068 +0.013	40	±0.195		
AM 354525	35	+0.044 +0.009	45	+0.068 +0.013	25	±0.165		
AM 354535	35	+0.044 +0.009	45	+0.068 +0.013	35	±0.165		
AM 354550	35	+0.044 +0.009	45	+0.068 +0.013	50	±0.195		
AM 050908	5	+0.016 +0.000	9	+0.038 +0.013	8	±0.11		
AM 060910	6	+0.016 +0.000	9	+0.038 +0.013	10	±0.11		
AM 060912	6	+0.016 +0.000	9	+0.038 +0.013	12	±0.135		
AM 060904	6	+0.016 +0.000	9	+0.038 +0.013	4	±0.1		
AM 061012	6	+0.016 +0.000	10	+0.038 +0.013	12	±0.135		
AM 061016	6	+0.016 +0.000	10	+0.038 +0.013	16	±0.135		